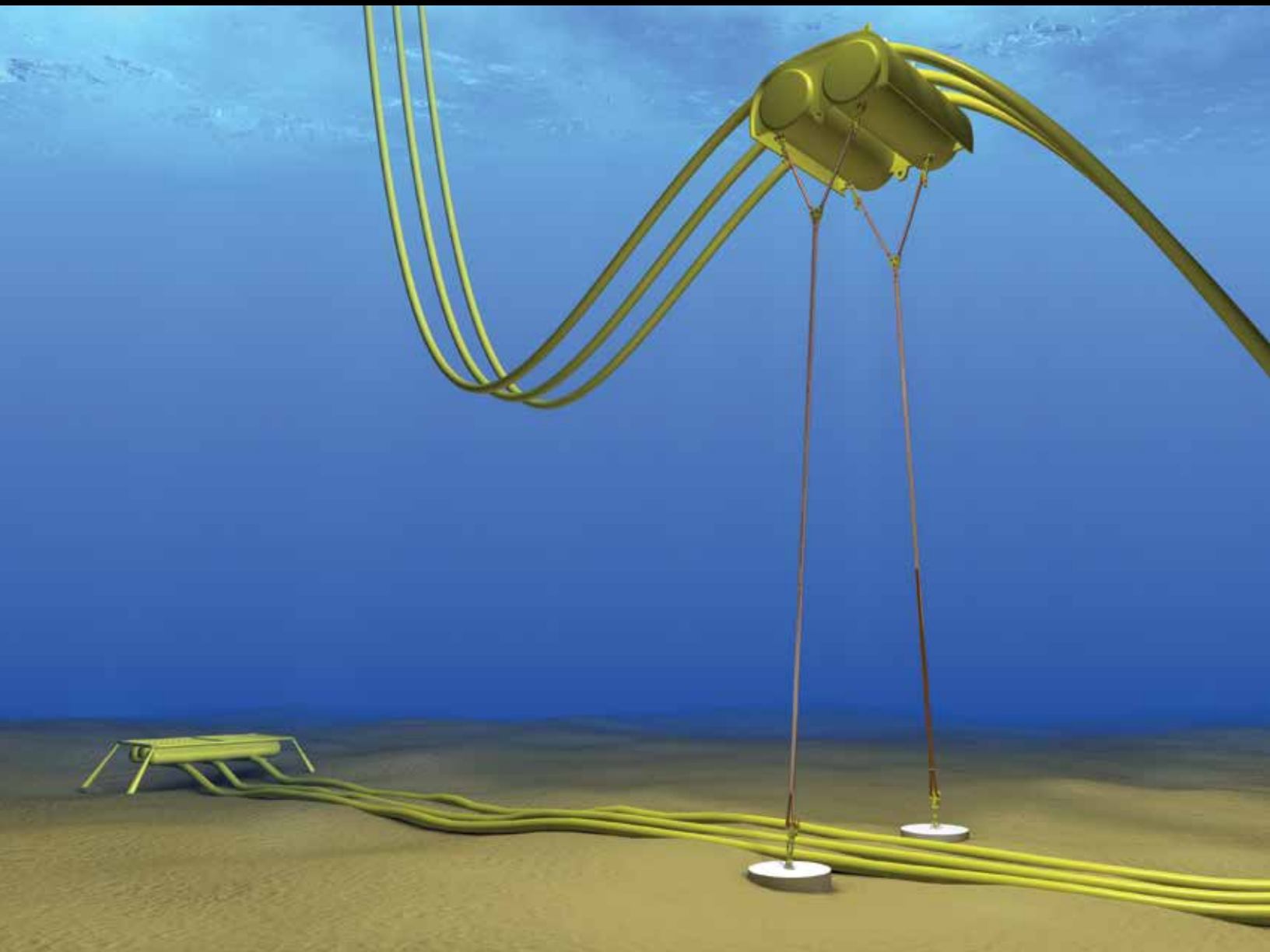
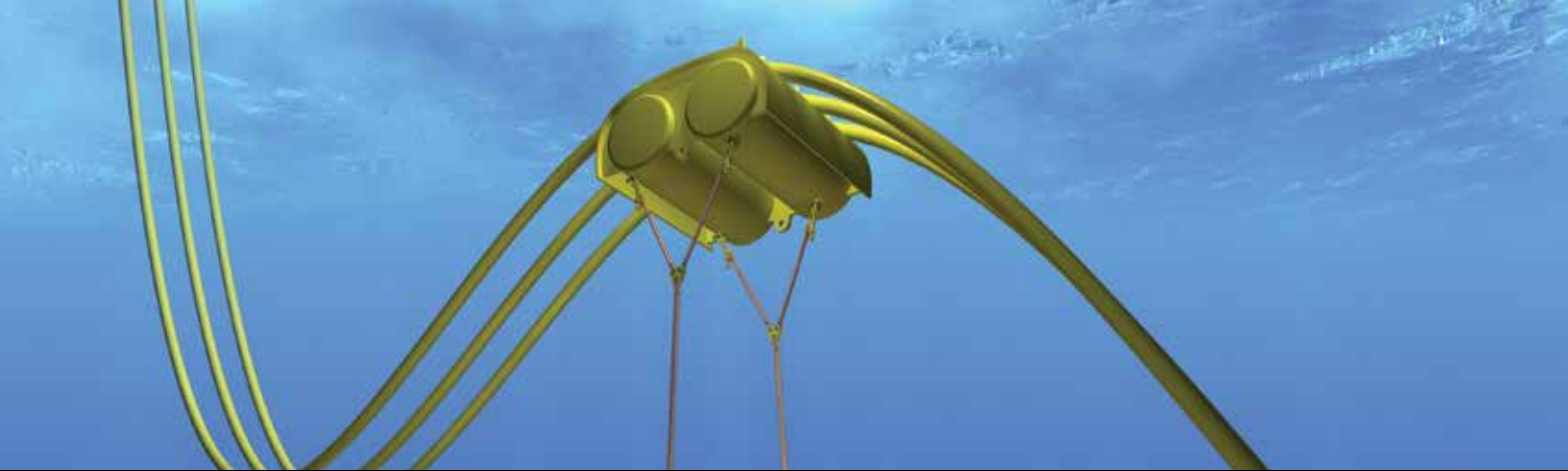


Subsea

Engineered Synthetic Tether Solutions





Synthetic Tethers

Cortland synthetic tethers offer many advantages over traditional steel wire and chain

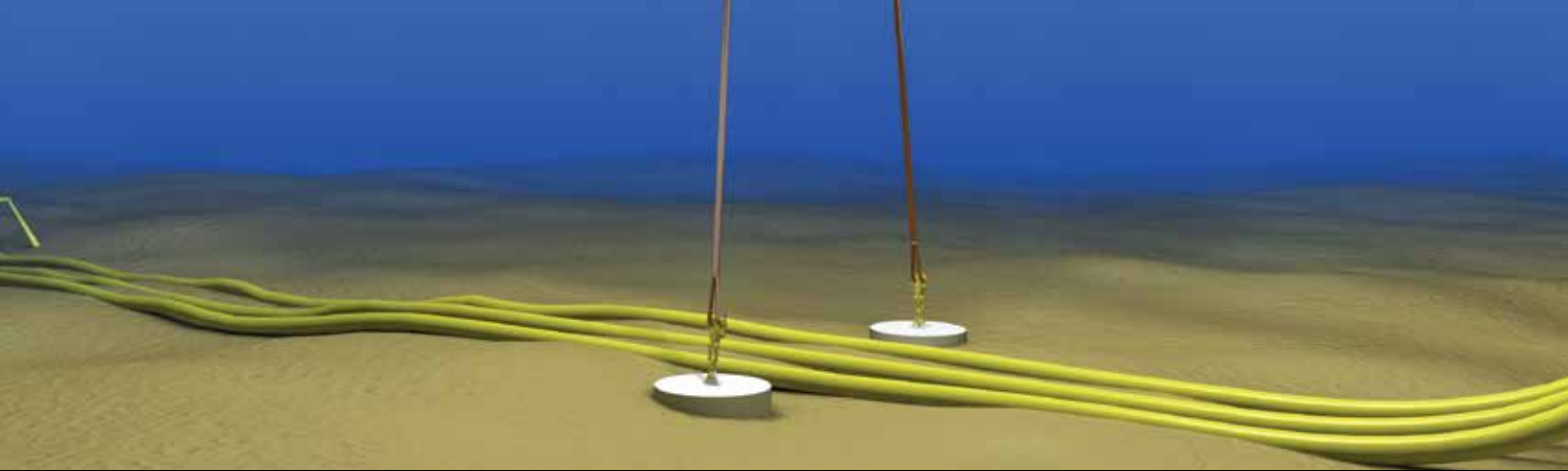
Cortland synthetic fiber subsea tethers, now including Selantic® Tethers, are among the most highly-rated in the world, logging an impressive track record for more than 20 years. Our subsea tethers have been used in the mooring of flexible risers and umbilicals, and for mooring of Mid Water Arch (MWA) systems.

Traditionally, tethers are engineered using chain, however, high performance synthetic rope tethers have been found to be considerably more effective. Advantages in using synthetic fiber ropes over steel wire or chain include:

- Significant weight savings—resulting in reduced cost in buoyancy. They are simpler and smaller than chain tethers, therefore reduced fabrication, and installation cost (smaller rigging, transport, time saving, etc.) is provided.
- Durability—better than steel for corrosion and fatigue resistance.
- ROV friendly system—easy to install using divers or ROVs, and easy change out of components.
- Design life times of up to 50 years are achievable.

Custom integrated hardware components make installation and change out even easier

Cortland is constantly developing new hardware items that can interface with our slings, tethers, and rope systems, which are specially designed for ROV installation without the need for costly diver intervention. Examples include: ROV hooks, delta plates, plate shackles, and anchor bases for riser tethers. These hardware components allow for full rotational freedom, and components with an integrated pull down attachment allow for complete tether change out operations. There is no need for extra pad eyes on the anchor or mid water arch.



Shackle interface to MWA or riser clamp

Twin trunnion plate for bridle tether connection

Synthetic bridle tether

Selantic delta plate for direct connection to tethers

Main tether

Selantic anchor connector

Shackle interface to standard pad eye on anchor



Twin Trunnion Plate

- Connection to standard pad eye on MWA
- ROV operated handles for locking tether eyes on trunnions
- Handle for ROV positioning
- Pad eye with shackle for connection of pull down rigging arrangement
- Anode for corrosion protection
- Free rotating connection towards MWA

Selantic Delta Plate

- Double plate with pins for direct interface to Tether eyes
- Handle for ROV positioning
- Anode for corrosion protection
- Top handling shackle for lifting of plate

Selantic Anchor Connector

- ROV operated connection towards anchor
- 2pc. ROV handles for locking Tether in position
- Pad eye with shackle for connection of pull down rigging arrangement
- Anode for corrosion protection
- Free rotating connection towards the anchor

USA – Anacortes, WA
Tel: +1 (360) 293-8488
anacortes@cortlandcompany.com

The Netherlands – Ede
Tel: +31 682 101 602
cortland@cortlandcompany.com

USA – Houston, TX
Tel: +1 (832) 833-8000
houston@cortlandcompany.com



Cortland is a global designer, manufacturer, and supplier of technologically advanced ropes, slings, and strength members. Collaborating with customers, our team uses its experience in high performance materials and market knowledge to transform ideas into proven products.

For more than 35 years, our custom-built solutions have been developed for work in the toughest environments and to overcome some of the world's greatest challenges. They consistently enable our customers to meet the demands of the aerospace, defense, medical, research, subsea, marine, and energy industries.

Cortland is a part of the Enerpac Tool Group (NYSE: EPAC), a diversified industrial company with operations in more than 30 countries. cortlandcompany.com